



Koskote

Architectural Powder Coatings Colour Guide

Name Behind Quality



Introducing KOSSAN PAINT



Kossan Paint (M) Sdn Bhd has its humble beginning back in 1987. It has been putting its efforts in manufacturing and marketing of Marine Paints, Protective Coatings and Decorative paints that provided a total solution to the needs of protection and decoration. Encouraged by the wide acceptability of its wet paint products, Kossan Paint (M) Sdn Bhd went a step further to introduce Powder Coatings products in early 2001.

The company has continuously invested heavily in skilled training and product innovation (R&D) to provide superior quality at an affordable price.

Kossan Paint operates with total workforce of 180 workers and has grown from strength to strength not just through superior quality and services but also the employment of advance manufacturing equipment and aggressive R&D initiatives. Kossan Paint is able to roll out its products in a more cost-effective mode compared to its rivals.

Kossan Paint (M) Sdn Bhd currently runs on a state-of-the-art facility along Jalan Kapar, Klang, and Selangor. Spreading over a production area of 17,500 square meters, the plant is equipped the most sophisticated manufacturing equipment and an intergraded R&D department. The plant will have the capacity of churning out some 21,600 tonnes per annum of marine & protective coatings, powder coating, decorative paints & etc.

Powder Coatings

"Powder Coating an excellent choice for the environment."

Powder coating is a type of coating that is applied as a free-flowing, dry powder. The coating is typically applied electrostatically and is then cured under heat to allow it to flow and form a "skin". **Kossan Powder Coating** is mainly used for coating of *metals, such as household appliances, aluminium extrusions, drum hardware, and automobile and bicycle parts.*

It provides a hard finish that is tougher and more durable finish than liquid paints can offer, while still providing an attractive finish. Powder coated products are more resistant to diminished coating quality as a result of impact, moisture, chemicals, ultraviolet light, and other extreme weather conditions. In turn, this reduces the risk of scratches, chipping, abrasions, corrosion, fading, and other wear issues. In addition to being durable, powder coating is an attractive choice due to environmental advantages.



Kossan *Koskote* Architectural Powder Coatings

Koskote APE-Series is an outdoor durable types polyester powder coatings designed to meet AAMA 2603 specifications whereas *Koskote* SAPE-Series is a superdurable types polyester powder coatings designed to meet AAMA 2604 specifications. Both give decorative finishes provides excellent outdoor durability and resistance to yellowing on prolonged exposure to heat. These products are specially formulated to meet most stringent requirements for colour stability, gloss retention and corrosion protection therefore it is suitable for application to architectural work.

APPLICATIONS

Curtain Walls	Doors	Extrusions	Frames	Fencings
Light Poles	Metal Facade	Panelling	Railings	Window Frames

PHYSICAL PROPERTIES

Appearance	: Free flowing fine powder
Colour	: Wide colour range
Specific gravity	: 1.20 ~ 1.75 gm/cm ³ depend on colour
Volume Solid	: 100%

PRODUCT DATA

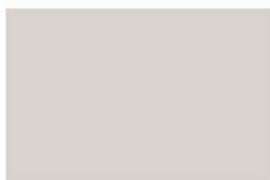
Properties	Test Method	<i>Koskote</i> APE	<i>Koskote</i> SAPE
Dry Film Thickness	ASTM D1400	60 microns minimum	60 microns minimum
Gloss	ASTM D523 @ 60°	High, Medium & low gloss	High, Medium & low gloss
Pencil Hardness	ASTM D3363	H minimum	H - 2H
Cross Hatch Adhesion (2 mm)	DIN 53151	GT = 0	GT = 0
Direct Impact (1/10" distortion)	ASTM D 2794	No film removal	No film removal
Salt Spray Resistance	ASTM B 117	1.6 mm maximum undercutting after 1500 hours	Meet or exceed 1.6 mm maximum undercutting after 3000 hours
Humidity Resistance	ASTM D 2247	Few no.8 blisters maximum after 1000 hours	Blistering not exceeding "few" no.8 after 3000 hours
Accelerated Weathering Resistance QUV-A 340nm	DIN EN ISO 11507	1000 hours - Pass Gloss Retention : >50% Delta E : <8	3000 hours - Pass Gloss Retention : >50% Delta E : <8

WARRANTY INFORMATION

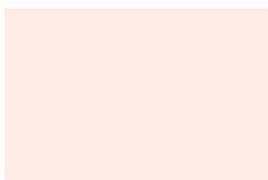
Kossan Paints offers a comprehensive warranty on *Koskote* APE & SAPE Architectural Powder Coatings. For complete warranty information and a copy of the warranty, please contact your nearest Kossan sales representative.

**The colours shown in this colour card are as close as possible to the actual paint colours as per modern printing techniques allow. However, actual colour chips shall have some degree of variation and therefore, actual colour chips shall be treated as final. Actual powder coatings finishes are available upon request. Custom colour matches are also available within the limits of durable colour pigments.*

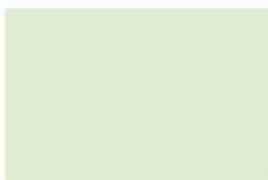
NEUTRAL COLOURS



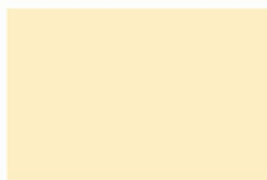
Bone White



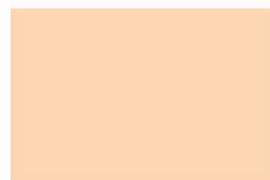
Orchid White



Aqua White



Lily White



Off White



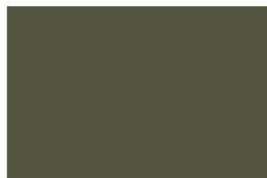
Venus



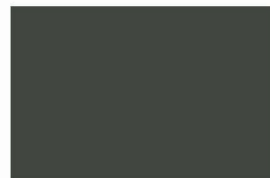
Sand Stone



Smoke Grey



Executive Grey



Thunder Grey



Moonlit Bay



Mistral



Silver Grey



Middle Grey



Dark Grey



Pebbles



Bamboo



Light Toast



Maple



Nutmeg



Rustic Brown



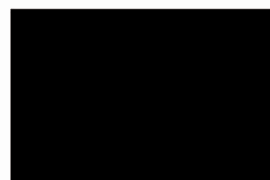
Deep Leather



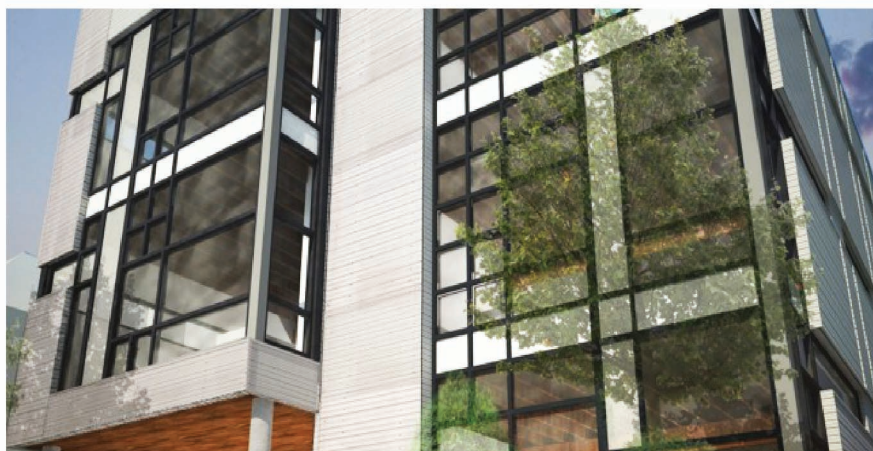
Leather



Dark Charcoal



Black



Gloss Levels and Finishing



30



60



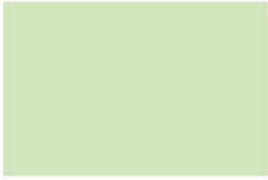
80



Sand Texture

** A reasonable degree of colour variation can be expected on production line application.*

EXOTIC COLOURS



Green Myth



Lime Fizz



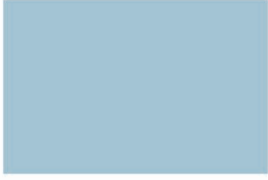
Tropicana



Jade Green



Signal Green



Fragile Blue



Blue Opal



Pacific Blue



Atlantis Blue



Ultramarine Blue



Lemon Ice



Buttercup Bouquet



Liming



Jasmine



Golden Yellow



Acapulco Sun



Chelsea



Orange Peel



Orange Zest



Orange



Morning Moon



Arabesque



Celebration



Manor Stone



Claret Shadow



Rose Wood



Oak



Coral



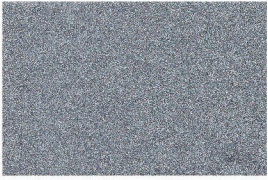
Cherry Brown



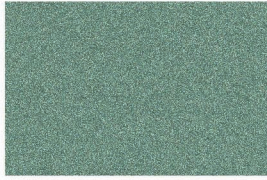
Maroon



METALLIC COLOURS



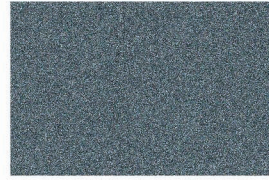
Silver Sky



Bright Seafoam Green



Green Metallic



Medium Green



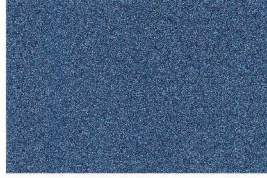
Dark Green



Blue Sparkle



Deep Blue



Blue Silver



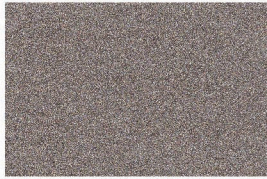
Charcoal Blue Silver



Midnight Blue



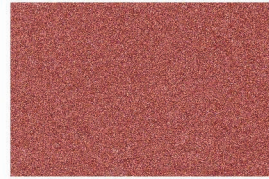
Champagne Bronze



Light Bronze



Copper



Copper Bronze



Dark Bronze



Gold Watch



Gold



Royal Gold



Classic Gold



Medium Brown



Silver



Bright Silver



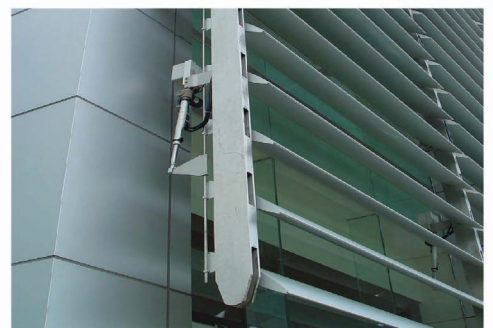
Silver Gray



Platinum Silver



Dark Silver Smith



Guide To Your Aluminium Finishes



Some Typical Application

Liquid PVDF Coatings

Monumental/ high performance:

Curtain wall and architectural window applications such as high-rise offices, commercial buildings, hospitals, universities, etc.

Powder Coatings

Environmentally friendly, non-monumental:

Storefront & entrance projects.

Shopping centers, low-rise commercial buildings, schools, etc.

Anodizing

Any high or low-rise application that includes curtain wall, storefronts, entrances or windows.

Characteristics

Superior colour and gloss retention, corrosion resistance and color range.*

Meets superior paint performance level of AAMA 2605.

"Soft" paint can scratch or mar more easily than Powder coatings or anodizing.

Environmentally friendly & solvent free.

Offers superior abrasion resistance to liquid paints.

Full range of colors available.*

Meets high performance of AAMA 2604.

Slightly less color & gloss retention than PVDF liquid.

Custom shades available subject to technical approval.

Superior surface hardness, abrasion resistance & scratch resistance compared to any other coating.

Will not peel or chalk.

Inorganic coating is an integral part of the aluminum.

Meets AAMA 611.

Limited color selections (clear, black and bronzes).*

Poor resistance to alkaline & acid.

Colour Selections *

✓✓✓✓

✓✓✓

✓✓

Colour Retention

✓✓✓✓

✓✓✓

✓✓✓✓

Abrasion Resistance

✓

✓✓✓

✓✓✓✓

Environmental Impact

✓✓

✓✓✓✓

✓

Alkaline/Acid Resistance

✓✓✓✓

✓✓✓✓

✓

Uniformity Of Finish

✓✓✓✓

✓✓✓

✓✓

Cost

\$ \$ \$ \$

\$ \$ \$

\$ \$



**KOSSAN PAINT (M) SDN BHD
(Central Branch)**

1, Jalan Koporat 1/KU 9,
Taman Perindustrian Meru,
42200 Kapar, Selangor Darul Ehsan, Malaysia
Tel: 03-3392 2799 03-3392 4296 / 97 / 99 / 4307
Fax: 03-3392 3799
E-mail: sales@kop.com.my

**KOSSAN PAINT (M) SDN BHD
(Kota Kinabalu Branch)**

Lot SD 39 Semi-Detached Warehouse,
Lorong Industrial Warisan 3,
Taman Industrial Warisan Indah.
KM11.2, Jalan Tuaran, Inanam,
88450 Kota Kinabalu, Sabah.
Tel: 088-383 457
Fax: 088-382 457

**KOSSAN PAINT (M) SDN BHD
(Sandakan Branch)**

Ground Floor, Block N,
Lot 9B, Bandar Ramai-Ramai,
P.O. Box 317, 90007 Sandakan, Sabah.
Tel: 089-272 417
Fax: 089-272 451

**KOSSAN PAINT (M) SDN BHD
(Sibu Branch)**

No.4, Jalan Maludan Utara,
96000 Sibu, Sarawak.
Tel: 084-216 291
Fax: 084-215 101